



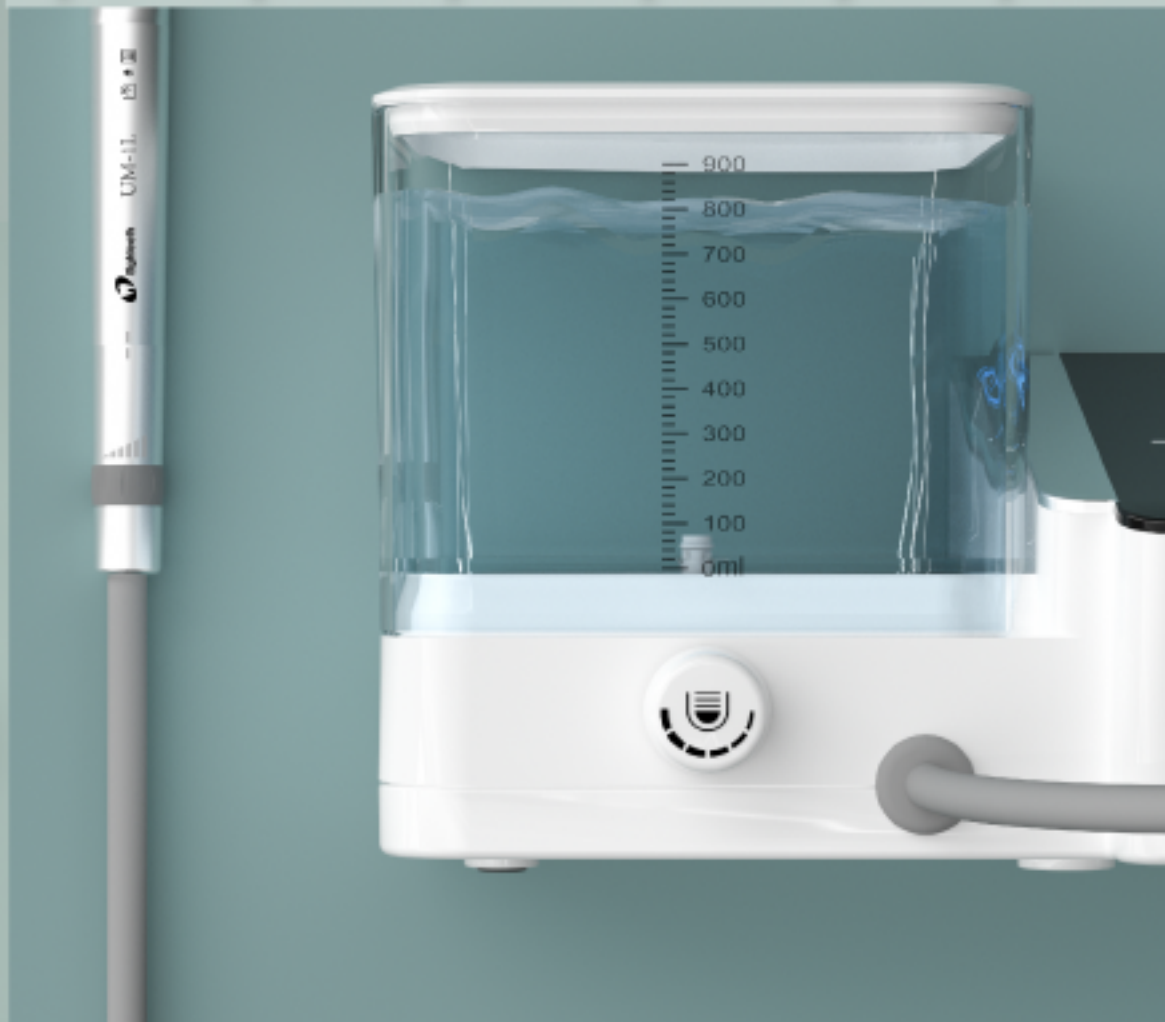
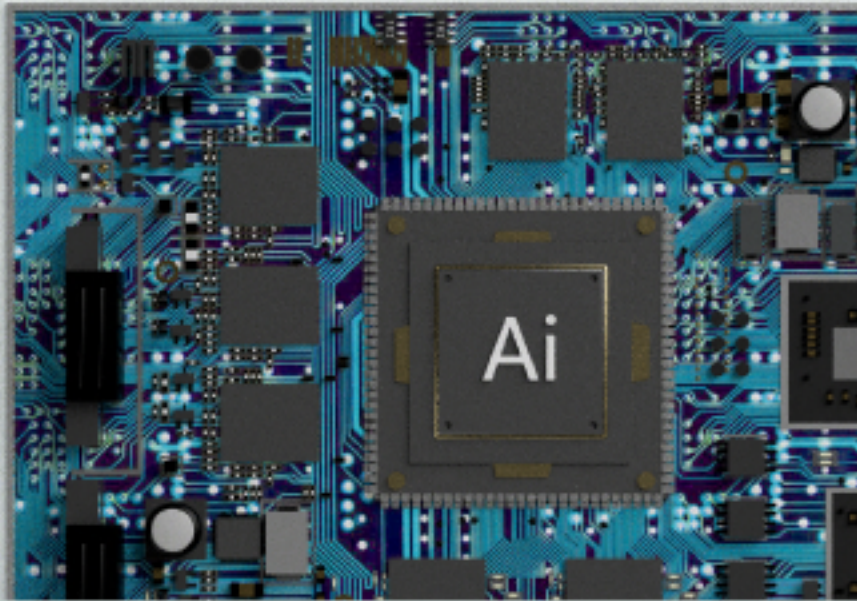
It's time for

UltraMint Pro !



3 In 1

Scaling | Periodontic | Endodontic



One scaler, *2* solutions

Wide range of frequency: 25kHz-42kHz

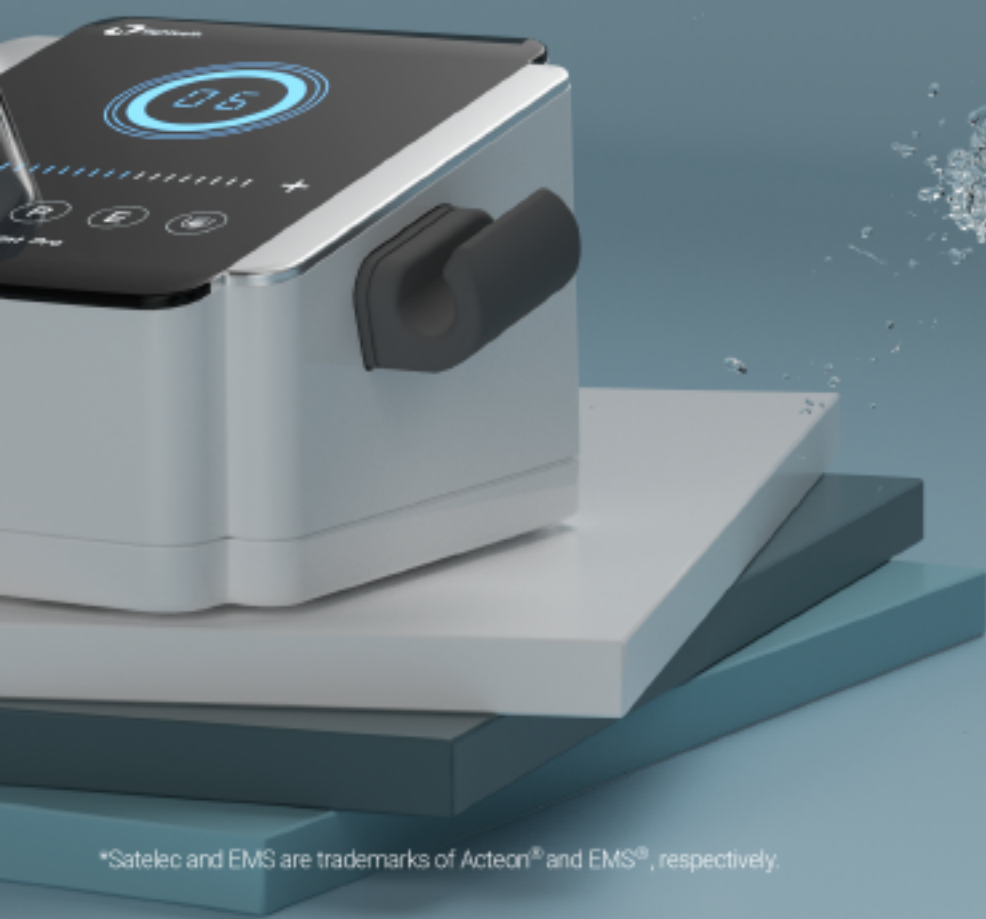
- We are proud to give you two solutions to perform at your best- both handpieces (EMS type and Satelec type) provided by Eighteeth are compatible with UltraMint & UltraMint Pro.*
Scaling can be as convenient as you can imagine.



- Satelec type



- EMS type



AI Engine

Scaling has never been so intelligent!

- Customized treatment based on tooth surface conditions
- Elliptical stroke patterns with polishing effect
- Intelligent degenerative feedback
- Smart touch control system-ultrasensitive & waterproof
- Digital controlled automatic frequency tracking
Ensures machine works on optimum frequency
- Sine wave drive
Avoids stimulation caused by instantaneous current output; ensures comfortable treatment

Soft Perio Power for Ultimate Comfort

Autoclavable plastic box - tips*6, universal wrench*1, EMS type handpiece*1

Autoclavable plastic box - tips*6, universal wrench*1, Satelec type handpiece*1

*Applicable for all tips from Eighteeth

Smart touch system - ultrasensitive & waterproof

Intelligent self-cleaning - makes disinfection easy and avoids cross-infection

Two ways of water supply - Changing supply methods is easier than ever before

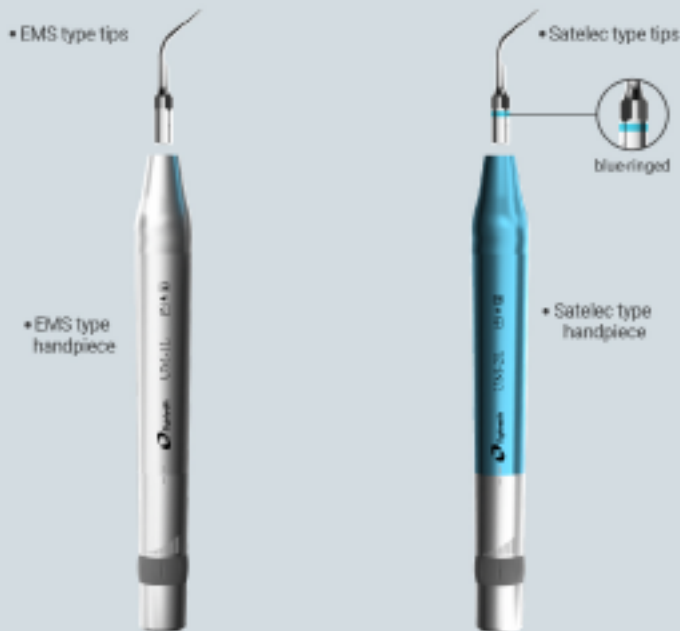
900ml stand-alone bottle with clear 20ml scale mark makes it convenient for formulating liquid.

Detachable handpiece with LED - autoclavable, ergonomic, brighter visibility

Detachable and autoclavable handpiece holder, resists cross-infection

Water control directly from handpiece

Ergonomic foot pedal



Tips: G1 G2 G4 P1 P3 E4
universal wrench, EMS type handpiece



Tips: E3-SD E5-S E7-S P4-S G1-S G2-S
universal wrench, Satelec type handpiece

1 scaler, 2 solutions

Scaling



G1 **G1-S**

Removal of supragingival calculus



G2 **G2-S**

Removal of significant supragingival calculus



G4 **G4-S**

Used for supragingival and interdental space scaling



G5 **G5-S**

Removal of marginal supragingival calculus and plaque

Periodontic



P1 **P1-S**

Removal of subgingival calculus and periodontal irrigation



P3 **P3-S**

Removal of calculus deep in periodontal pocket and its irrigation



P4 **P4-S**

Removal of calculus in shallow pockets



P52 **P52-S**

Supragingival scaling



P50L **P50L-S**

Used for subgingival calculus probing, subgingival proximal surface scaling and root planing



P50R **P50R-S**



P53L **P53L-S**

Used for subgingival calculus probing, subgingival proximal surface scaling and root planing



P53R **P53R-S**



P59 **P59-S**

Used for subgingival calculus probing and scaling



P56 **P56-S**

Removal of significant supragingival calculus and plaque



P3D **P3-SD**

Used to level off the surface of endo after the periodontal flap surgery



P4D **P4-SD**

For locating root canal and removal of calcification from one-third of crown

Endodontic



E1 E1-S

120° angle holder for 0.7mm-0.8mm endo file for root canal cleaning



E3 E3-S

For lateral condensation of gutta percha by heating effect



E4 E4-S

Removal of foreign filling material during retreatment



E5 E5-S



E7 E7-S

Removal of broken instrument



E8 E8-S

Flexible and used to brush the canal walls during retreatment



E9 E9-S

Removal of broken instrument



E10 E10-S

Used for root planning in the retrograde preparation of root canal



E3D E3-SD

Enlargement of the canal walls to remove the broken instrument



E30 E30-S

Removal of deep foreign particles in canal



E31 E31-S

Removal of foreign particles from one-third of the canal



E4D E4-SD

Removal of hard material in canal during retreatment

Endodontic



E5D E5-SD

Removal of hard material in canal during retreatment



E6D E6-SD

Removal of foreign material in cavity to access canal orifice



E7D E7-SD

Removal of calcification and filling material in cavity to access canal orifice during retreatment



E8D E8-SD

Used for root canal retrogression, efficient root apical polishing

Cavity Preparation



TC1D



TC1-SD

Removal of cervical caries and caries on the occlusal surface