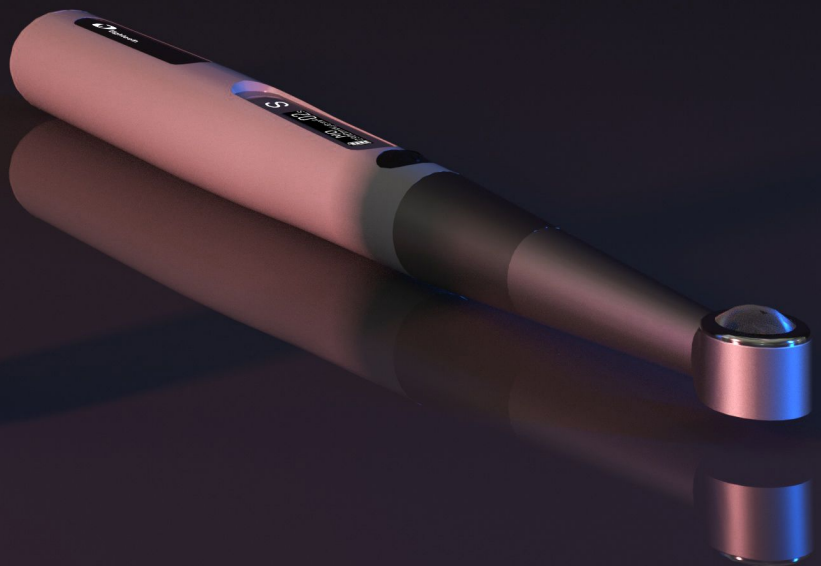
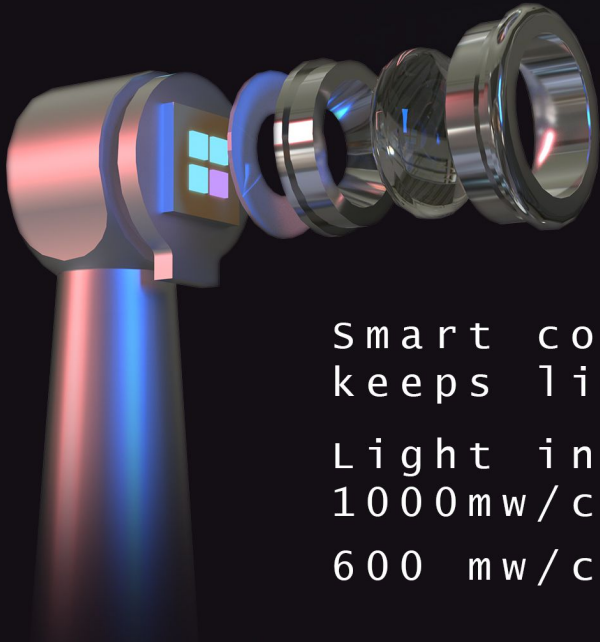


# CuringPen

4 LEDs curing light

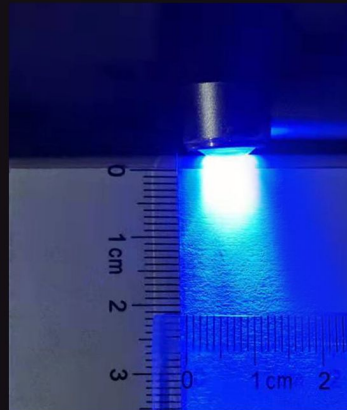




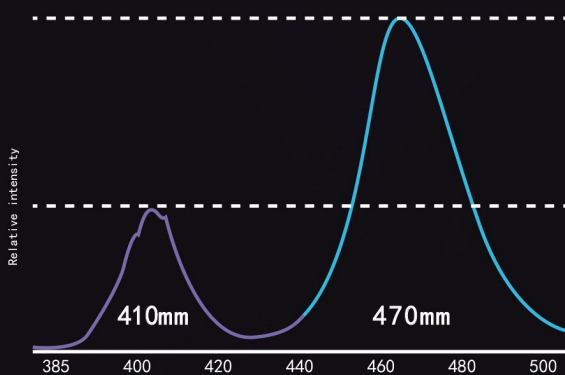
Smart controlling chip  
keeps light output consistent

Light intensity:  
 $1000\text{mw}/\text{cm}^2$ ,  $1500\text{mw}/\text{cm}^2$ ,  $2300\text{mw}/\text{cm}^2$   
 $600\text{mw}/\text{cm}^2$  (detect mode)

Curing Depth : 10mm



Curing Width : 10mm

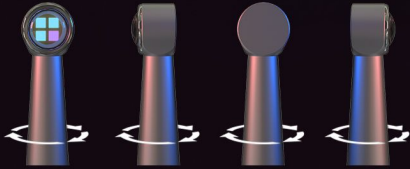


Wavelength : 385 - 515 nm

3 Blue, 1 Violet, 10w LED



360° rotatable head

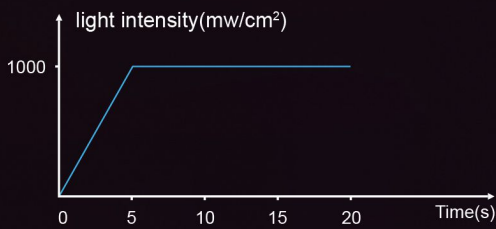


Intensity digital display

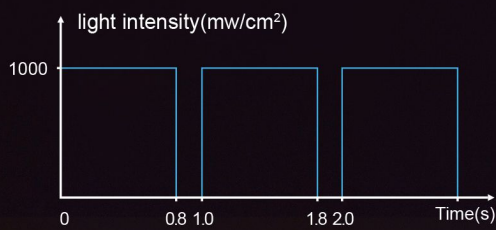


Multiple Curing Options

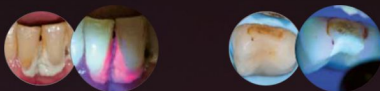
### Ramp mode



### Pulse mode



### Caries detection



## Technical parameter:

Dimension: 24\*21\*230(mm)

Net weight: 109g

Lens size:11mm

Power supply:

>1200 times,3 Sec

Maximum light intensity

## Curing pen

4 LEDs curing light

